



OCEANS

— ON MAIN —





Welcome

Oceans on Main is an exclusive residential development within the heart of Shaka's Rock, Ballito consisting of 22 contemporary Free Standing Homes, Villas, Luxury Penthouses and Executive Suites that offer the best in coastal living. Each opportunity has been carefully considered to create a luxurious lifestyle that is in harmony with its tranquil surrounds and maximises the exquisite sea views on offer.



Freestanding Homes

2 & 3 Bedroom 2 Bathroom

Luxury Penthouses & Executive Suites

3 BEDROOM 3 BATHROOM

Sea View Villas

2 & 3 BEDROOM 2 BATHROOM

Each opportunity has been carefully considered to create a luxurious lifestyle that is in harmony with its tranquil surrounds and maximises the exquisite sea views on offer



SITE DEVELOPMENT PLAN

PENTHOUSES & EXECUTIVE SUITE LEGEND

- SECOND FLOOR
- FIRST FLOOR

HOUSE LEGEND

- GROUND FLOOR

VILLA LEGEND

- FIRST FLOOR
- GROUND FLOOR



Freestanding Homes





HOUSE 8 - 3 Bed, 2 Bath

Floor area: 141m²
 Patio: 16m²
 Garage: 52m²

TOTAL AREAS - 209m²

HOUSE 7 - 3 Bed, 2 Bath

Floor area: 164m²
 Patio: 17m²
 Garage: 45m²

TOTAL AREAS - 226m²

HOUSE 6 - 3 Bed, 2 Bath

Floor area: 143m²
 Patio: 22m²
 Garage: 44m²

TOTAL AREAS - 209m²

* Optional extras: Pergola / Decking / splash pool & more



Freestanding Homes

HOUSE 3 - 2 Bed, 2 Bath

Floor area: 117m²

Patio: 20m²

Garage: 41m²

TOTAL AREAS - 178m²

HOUSE 5 - 3 Bed, 2 Bath

Floor area: 121m²

Patio: 20m²

Garage: 41m²

TOTAL AREAS - 182m²

* Optional extras: Pergola / Decking / splash pool & more



HOUSE 5



HOUSE 3



Sea View Villas

VILLA 1 & 2 - 2 Bed, 2 Bath

Floor area: 112m²

Patio: 14m²

Garage: 24m²

TOTAL AREAS - 150m²

VILLA 3 & 4 - 3 Bed, 3 Bath

Floor area: 114m²

Balcony: 14m²

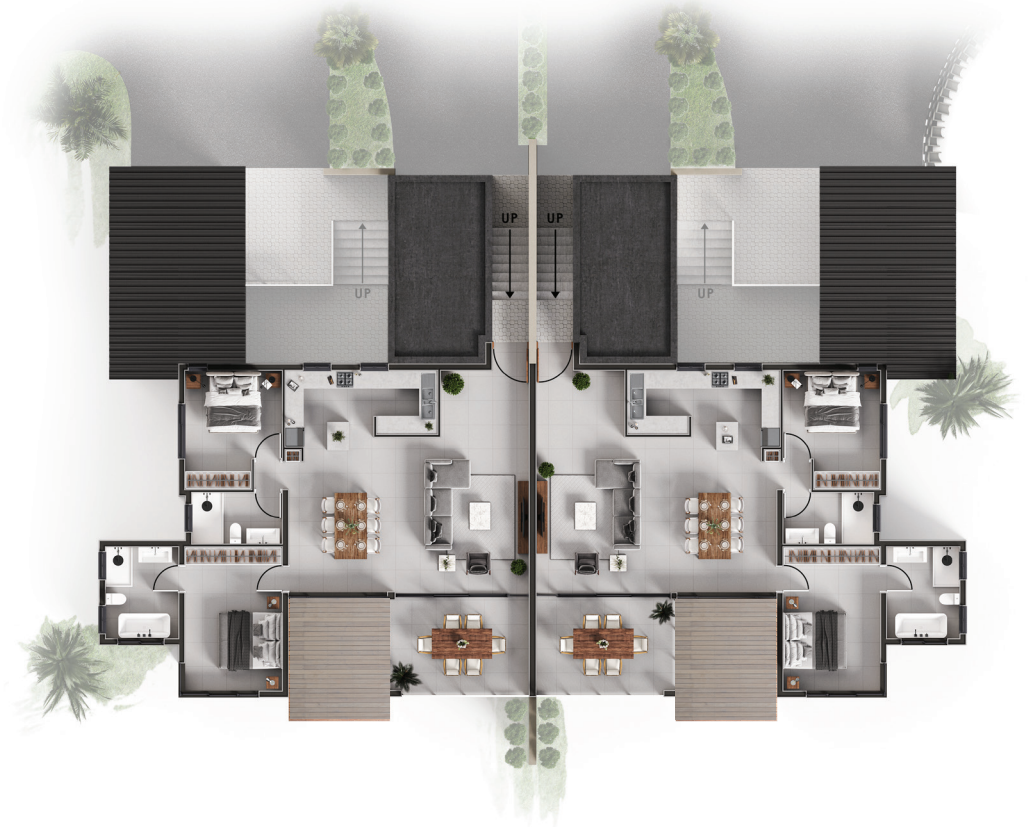
Garage: 26m²

TOTAL AREAS - 174m²

* Optional extras: Pergola / Decking / splash pool & more



GROUND FLOOR ADJOINED SINGLE STOREY HOUSE 1 & 2



FIRST FLOOR ADJOINED SINGLE STOREY HOUSE 3 & 4



Luxury Penthouses & Executive Suites



Block A - Executive Suites 2 & 3 - First Floor Apartment



Executive Suite 2 - 3 Bed, 3 Bath

Floor area:	136m ²
Balcony:	30m ²
Garage:	47m ²
TOTAL AREAS -	213m²

Executive Suite 3 - 3 Bed, 3 Bath

Floor area:	136m ²
Balcony:	30m ²
Garage:	47m ²
TOTAL AREAS -	213m²

Block A - Luxury Penthouse 1 & 4 - Second Floor Apartment



Luxury Penthouse 1 - 3 Bed, 3 Bath

Floor area:	136m ²
Balcony:	30m ²
Garage:	62m ²
TOTAL AREAS -	228m²

Luxury Penthouse 4 - 3 Bed, 3 Bath

Floor area:	136m ²
Balcony:	30m ²
Garage:	62m ²
TOTAL AREAS -	228m²

Block B - Executive Suites 6, 7 & 9 - First Floor Apartment



Executive Suite 6 - 3 Bed, 3 Bath

Floor area:	134m ²
Balcony:	27m ²
Garage:	47m ²
TOTAL AREAS -	208m²

Executive Suite 7 - 3 Bed, 3 Bath

Floor area:	119m ²
Balcony:	39m ²
Garage:	47m ²
TOTAL AREAS -	205m²

Executive Suite 9 - 3 Bed, 3 Bath

Floor area:	134m ²
Balcony:	27m ²
Garage:	49m ²
TOTAL AREAS -	208m²

Block B - Executive Suites 5, 8 & 10 - Second Floor Apartment



Luxury Penthouse 5 - 3 Bed, 3 Bath

Floor area:	134m ²
Balcony:	27m ²
Garage:	62m ²
TOTAL AREAS -	223m²

Luxury Penthouse 8 - 3 Bed, 3 Bath

Floor area:	119m ²
Balcony:	39m ²
Garage:	47m ²
TOTAL AREAS -	205m²

Luxury Penthouse 10 - 3 Bed, 3 Bath

Floor area:	134m ²
Balcony:	27m ²
Garage:	62m ²
TOTAL AREAS -	223m²

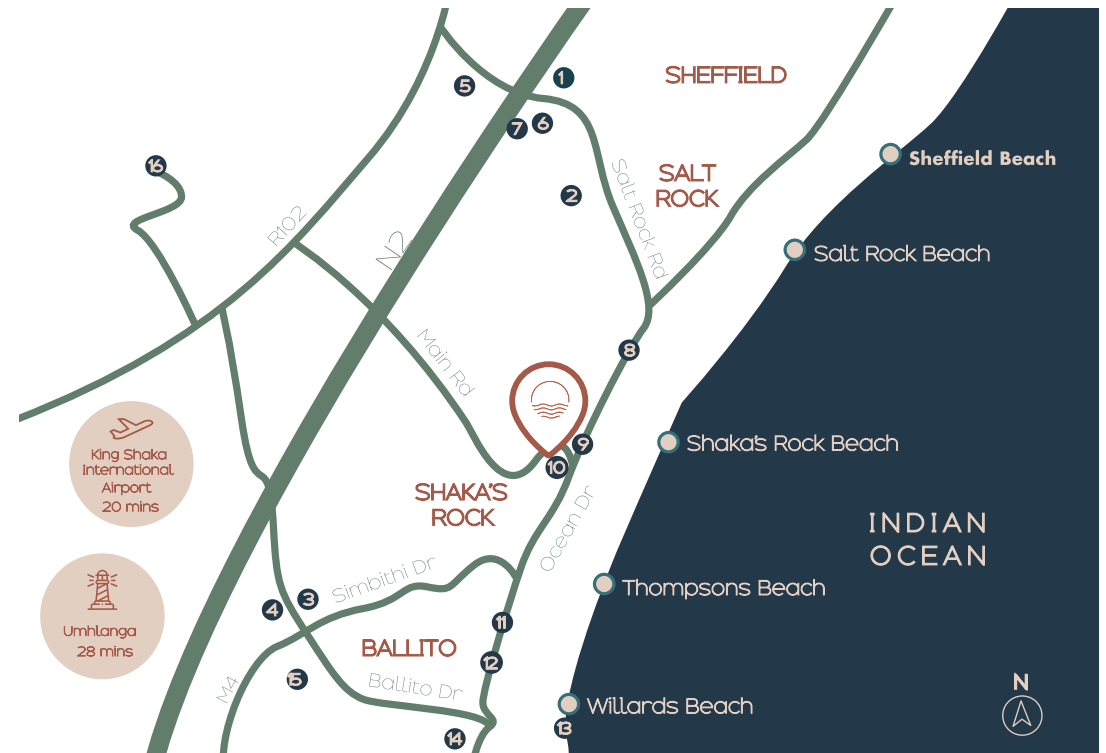
About the Area

The North coast is calling.

This is your opportunity to make the buoyant Shaka's Rock area your home. Situated in KwaZulu-Natal's sought-after North Coast region, this charming town is regarded as having a bubbly, close-knit community and characterised by its laidback, relaxed seaside lifestyle. Shaka's Rock is rooted in Zulu heritage, while still rapidly blossoming into a first choice for families and retirees across the country as a top residential node.

Engage in the authentic coastal way of life; make the bustling shopping hot spots your regular haunt, meet up with friends for sundowners at one of the many trendy restaurants and enjoy outdoor activities with the family. Oceans on Main is situated centrally and enjoys easy access to the N2 and M4 highways and is merely minutes away from the many pristine beaches in the area.

Tiffany's Mall	10 min
New Salt Rock Mall	6 min
Ballito Junction Mall	10 min
Ballito Lifestyle Centre	10 min
Burnedale Farm	8 min
The Litchi Orchard	7 min
Sage Centre	7 min
Mi acai, Siggis	3 min
Salt Cafe	1 min
Taste of Thai	1 min
Waterberry Cafe	5 min
Fiamma Grill	7 min
Ballito Boardwalk	8 min
Ocean Basket, Niko's, Concha	9 min
Netcare Alberlito Hospital	11 min
Sugar Rush Park	12 min
Shaka's Rock Beach & Tidal Pool	2 min





Professional Team

Development Company - McKenzie Property Group • **Architects** - Ewald Plekker Architects

QS - DBN Quantity Surveyors and Project Managers • **Engineers** - Bisschoff Ramphal Consulting Engineers

Electrical Engineers - Adamastor Consulting Security & Electrical Engineers

Contractors - Riverside Construction • **Legal** - Cox Yeats

Sales & Marketing - Dwell Properties



McKenzie Property Group



BISSCHOFF RAMPHAL
CONSULTING ENGINEERS





OCEANS

— ON MAIN —

oceansonmain.co.za